

From Home screen:

The screenshot shows the 'South Dakota Risk MAP' website. On the left, there is a navigation sidebar with a home icon at the top, followed by a series of dots, and the number '15' highlighted with a red arrow. The main content area is titled 'South Dakota Risk MAP' and 'FEMA Region VIII'. It includes a section for 'Discovery Meetings' and a list of bullet points. On the right, there is a large infographic titled 'YOUR COUNTY RISK MAP PROGRESS' which shows a timeline from Year 1 to Year 3.5+, with various milestones and a map of South Dakota counties.

Click the “15” in order to see the next section of bullets:

The screenshot shows the content of the website. The sidebar on the left has a home icon at the top, followed by a series of dots, and the number '15' highlighted with a red arrow. The main content area contains the following text:

The Discovery process identifies areas of flooding concern and helps to establish a community's highest priorities. Discovery also identifies opportunities for moving mitigation beyond planning and into action.

How to use the mapping journal and video tutorial

During Discovery, FEMA and the State reach out to local communities to do the following:

- Identify opportunities to support mitigation action through technical assistance, guidance, and grants;
- Gather information about local hazards and risks;
- Document needs related to all hazards identified in Discovery Meetings and through the National Flood Insurance Program (NFIP);
- Review current and historic mitigation plans to understand local mitigation capabilities and priorities, hazard risk assessments, and current or future mitigation activities; and
- Involve multi-disciplinary community staff to identify, evaluate, and mitigate risks to the community.

McCook County draft results page is middle bullet:

South Dakota Risk MAP Story Journal

South Dakota Risk MAP
FEMA Region VIII
South Dakota Emergency Management

McCook County Current Effective and 2021 Enhanced Data


Please zoom into your community or use the search bar in the upper right hand corner to navigate to your local community. Then use the slider bar in the center of the map to compare the Current Effective Floodplain (LEFT) to the 2021 Enhanced Data (RIGHT).

Current Effective Floodplain: The NFHL dataset represents the current, effective flood data nationwide in locations where maps have been modernized. It is a compilation of effective FIRMs databases and LDMCs. For more information, visit [FEMA's Map Service Center](#).

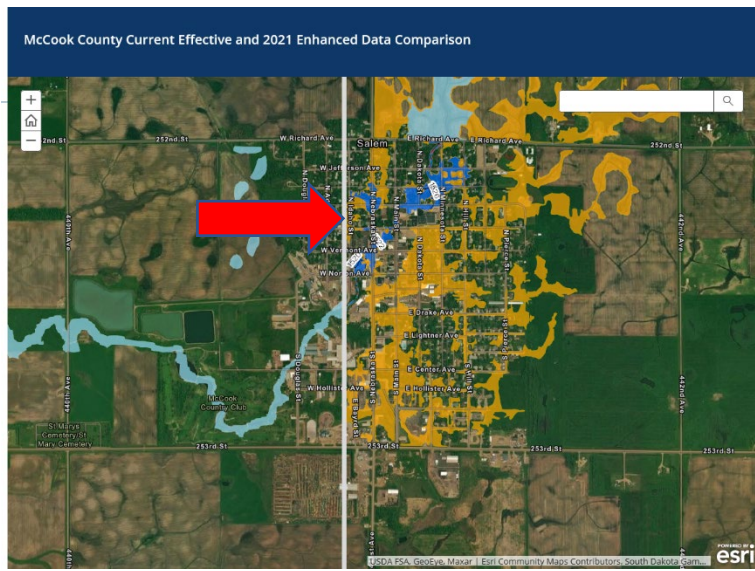
ZD BLE Enhancements: These flood hazard areas represent enhancements to the 2018 ZD BLE maps, to now include bridge and culvert data, as well as other refinements and revisions which will be described in more detail in the technical reports to accompany Preliminary Map release in early 2021.

Flood Zones

- A
- AE
- AE, FLOODWAY
- X: 0.2 PCT ANNUAL CHANCE FLOOD HAZARD



Use the slider bar to compare from effective (left side) to draft/updated (right side):



Otherwise, zoom around and navigate similar to GoogleMaps functionality.